



Doug Landreth - By the Sea



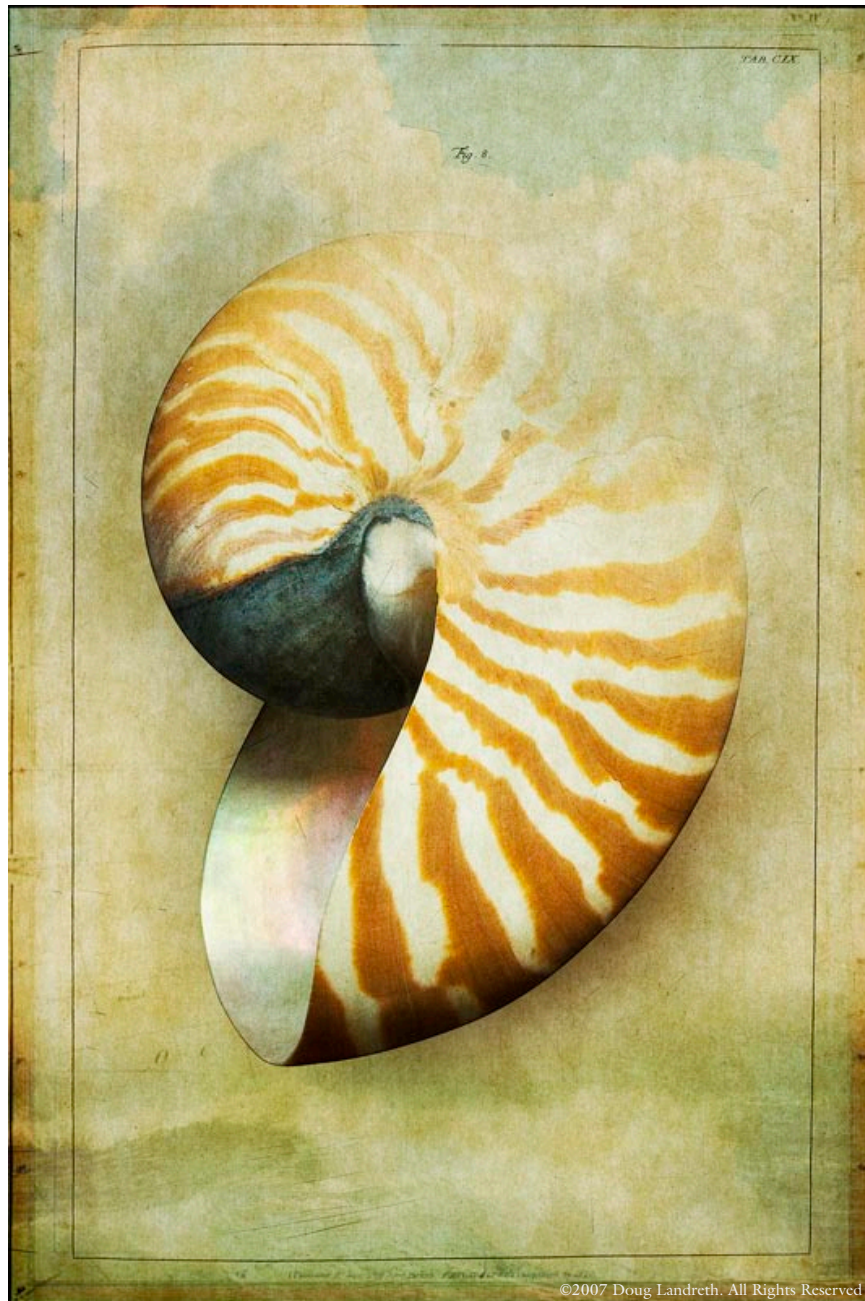
The Iris Gallery of Fine Art Photography  
617-895-8951 | 970.429.1010 | 413.429-6878

THE IRIS GALLERY OF FINE ART  
[alison@irisgallery.net](mailto:alison@irisgallery.net)  
413.644.0045

---

SEASHORE NO. 3

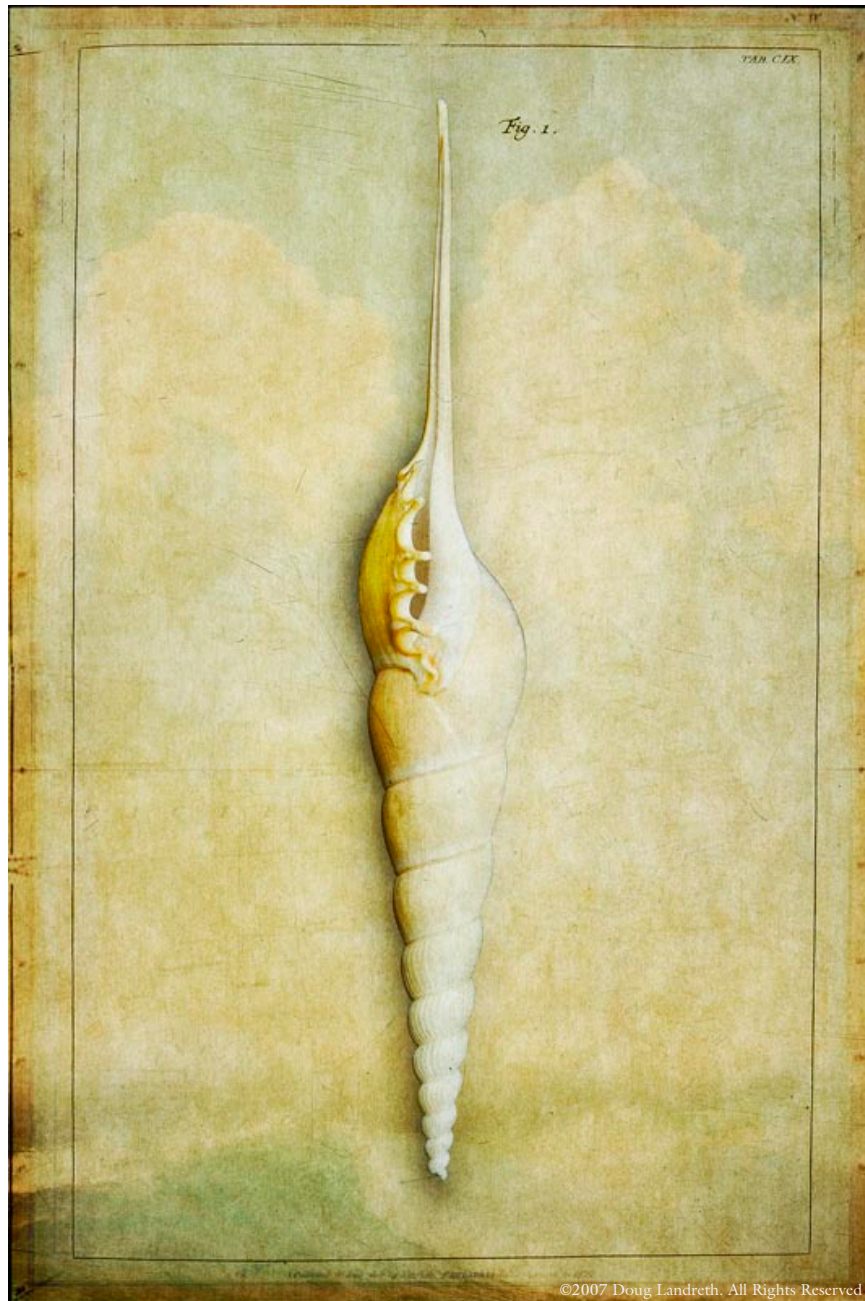
Archival Pigment Ink Print  
*signed*, Doug Landreth



THE IRIS GALLERY OF FINE ART  
[alison@irisgallery.net](mailto:alison@irisgallery.net)  
413.644.0045

SEASHORE NO. 4

Archival Pigment Ink Print  
*signed*, Doug Landreth



©2007 Doug Landreth. All Rights Reserved

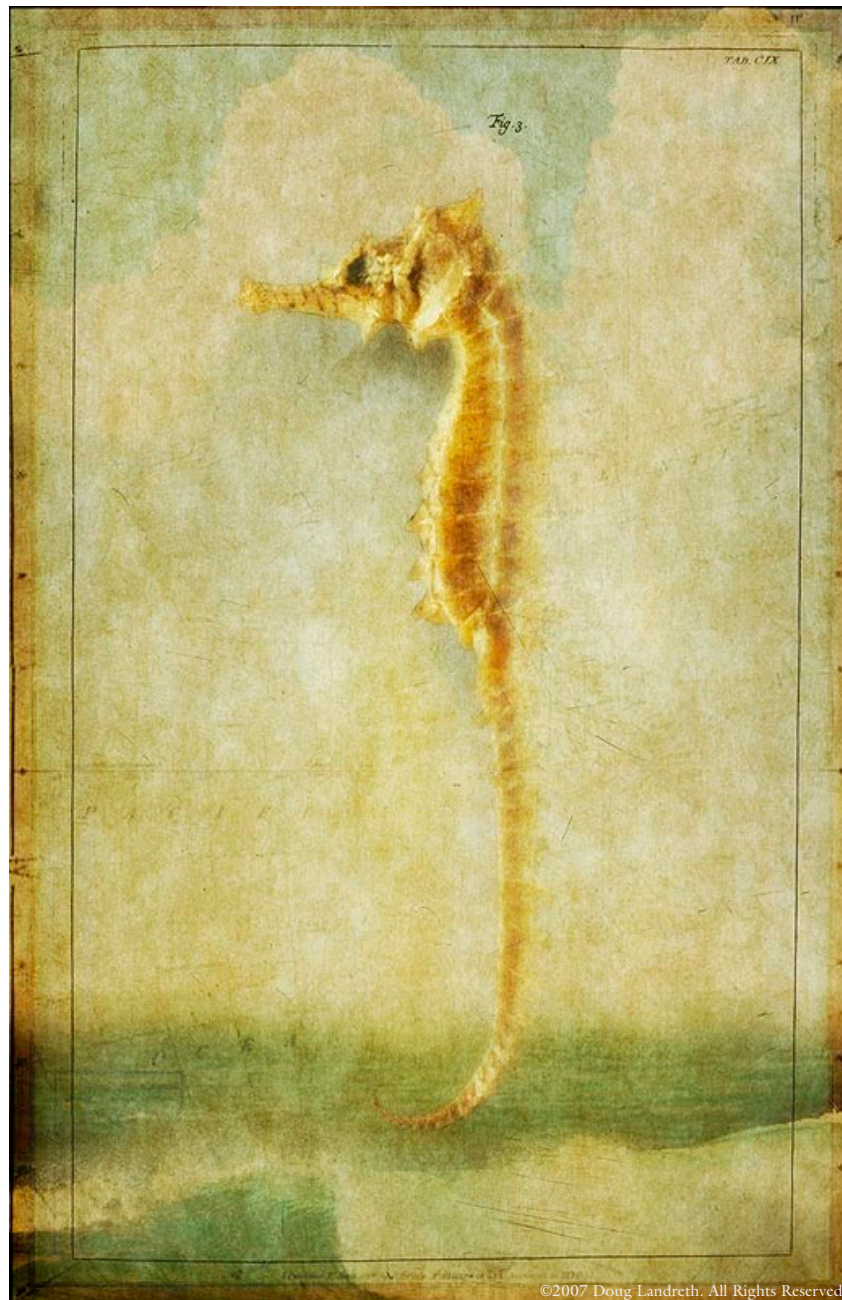


THE IRIS GALLERY OF FINE ART  
[alison@irisgallery.net](mailto:alison@irisgallery.net)  
413.644.0045

---

SEASHORE NO. 1

Archival Pigment Ink Print  
*signed*, Doug Landreth

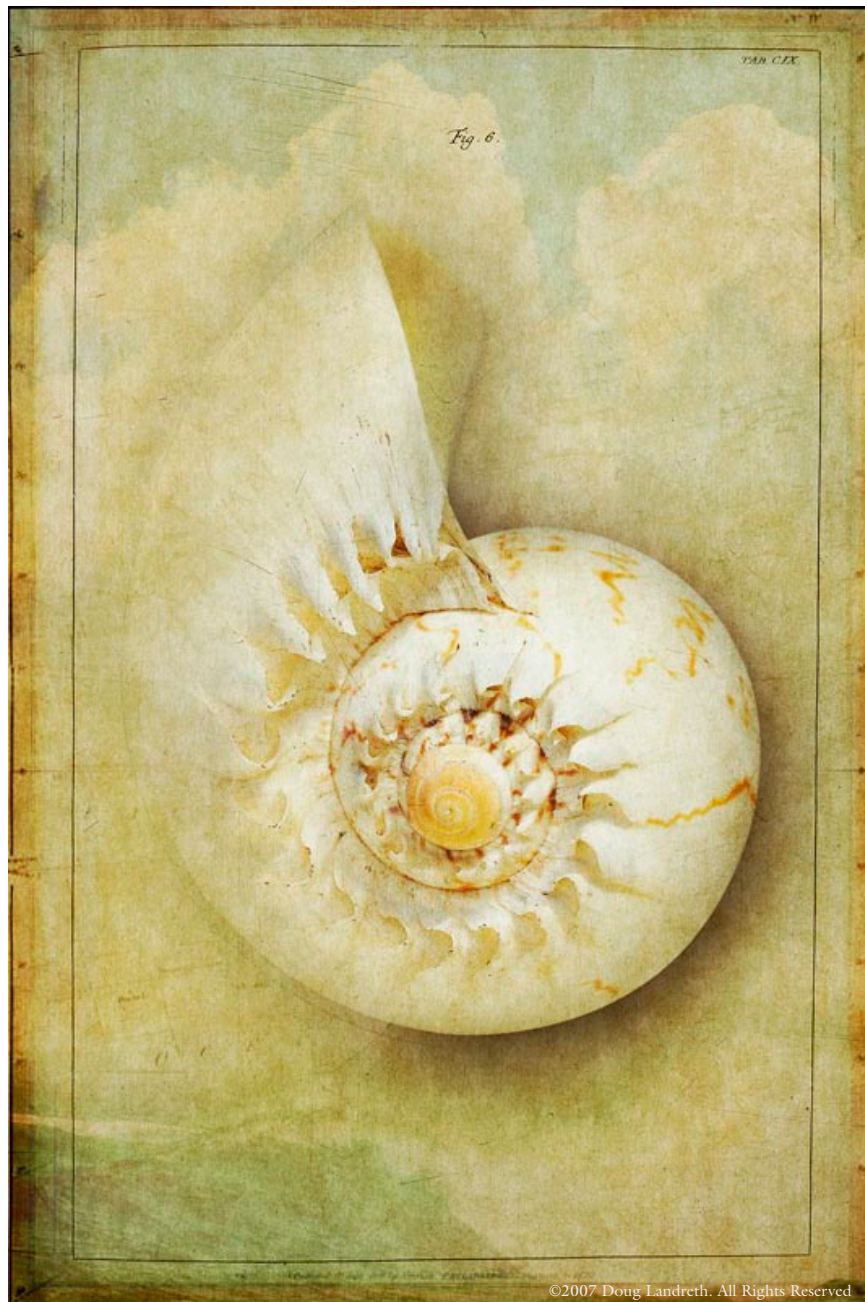


©2007 Doug Landreth. All Rights Reserved.

THE IRIS GALLERY OF FINE ART  
[alison@irisgallery.net](mailto:alison@irisgallery.net)  
413.644.0045

SEASHORE NO. 2

Archival Pigment Ink Print  
*signed*, Doug Landreth





## *About the Artist - Doug Landreth*

---

Doug Landreth first discovered photography in high school when he and his twin brother were headed for a trip to Europe and wanted to be able to document the journey. His interest grew as he became the yearbook's photographer during college, where he graduated with a degree in marketing. After saving money during his first years out of school, he managed to put himself through Brooks Institute, the well-known photography school in California.

This led to a successful commercial photography career based in Seattle, where he has worked for over 25 years with a group of clients that includes Starbucks, Adobe, Eddie Bauer and Microsoft. Doug's commercial work has been recognized for its excellence by "Communication Arts", "Photo Graphis" and "Print" magazines.

His fine art work started years ago as he started to try and take his photographs away from the stark clarity that cameras offer to a look that felt more like illustration and paintings. Rather than a photographer from an earlier time as a mentor, he points to the paintings of Andrew Wyeth and Winslow Homer as the influence for the textured and painterly look of his images. While the subject matter of his images may vary, they all carry a feeling of age, a patina gained by the passage of time.

Doug's fine art images were nominated for the "Aperture West Book Prize 2007" and he was a finalist in Photo Lucida's "Critical Mass 2006".

THE IRIS GALLERY OF FINE ART  
[alison@irisgallery.net](mailto:alison@irisgallery.net)  
413.644.0045

---



## *About the Artist - Doug Landreth*

### *A Selection of Solo Shows:*

- 2007 Iris Gallery of Fine Art Images, Great Barrington, MA
- 2007 Wall Space Gallery, Seattle, WA
- 2006 Emerald City Medical Arts, Seattle, WA.
- 2005 Art Walk, Neumonic Gallery, Seattle, WA.

### *A Selection of Group Shows:*

- 2007 Wall Space Gallery, Seattle
- 2007 Primary Elements, Cannon Beach, OR.
- 2007 Juried Show, Sixth Street Gallery, Vancouver, WA. (Best of Show)
- 2007 Fantasy and Fantasies, Center For Fine Art Photography, Fort Collins
- 2006 Dangenart Gallery, Nashville
- 2006 Art Expo NY, New York

### *Artist Lectures:*

- 2004 Featured Artist, Seattle University, Seattle
- 2004 On Digital Photography, Phase One Workshop, San Diego
- 2004 The Alternative Image and Creativity, Panel discussion ASMP, Seattle

### *Publishing & Press:*

- 2007 Alcove Books, The Art of Seeing,
  - 2006 "Camera Arts" Artist Showcase
  - 2006 "Photo Media", Doug Landreth: Layer by Layer
  - 2004 "Photo Media", People in the Industry
- 

THE IRIS GALLERY OF FINE ART  
alison@irisgallery.net  
413.644.0045

---